

Shirley Corsetier

Ready-to-Wow
2011

Be ready for anything
with street-savvy separates
that say sexy with style.

shirleyofhollywood.com



TABLE OF CONTENTS	
STYLE . . . ITEM	PAGE
34	TEXTRONIC STRETCH LACE THONG 21
35	TEXTRONIC STRETCH LACE HIPSTER 21
374	SHINY TEXTRONIC STRETCH LACE BANDEAUX TOP 21
623	STRETCH SATIN AND BLACK LACE WAIST CINCHER 16
665	DOLCE STRIPE WAIST CINCHER 16, 19
667	COTTON SATIN WAIST CINCHER 17, 20
2105	VERA SATEEN SKIRT WITH RUFFLE 24
2111	STRETCH SATIN BLOUSE 18
2115	COTTON SPANDEX HALTER TOP 20
2116	STRETCH LACE T-SHIRT 20
4227	SPANDEX AND STRETCH LACE LONG PANTS 24
4250	HEAVY SPANDEX SKINNY STRETCH PANTS WITH ZIPPERS 20, 25
4252	KNIT SHIRRED SKINNY PANTS 25
8997	SATIN TAPESTRY FLOWERED JACQUARD STRAPLESS CORSET 15
9001	STUNNING FLORAL TAPESTRY STRAPLESS CORSET 7
9393	SATIN JACQUARD LONG-LINE BUSTIER 1A
9510	SATIN STRAPPY CORSET 11
9511	COTTON SATEEN STRAPLESS CORSET 2
9512	DOLCE STRIPE TUX BUSTIER 1
20317	CHIFFON BLOUSE 3
25136	SHEER CHIFFON BLOUSE 18
25907	SATIN CORSET WITH BREAK AWAY ZIPPER FRONT 10, 20
25915	VELVET FLOCKED SATIN AND "EYELASH" LACE STRAPLESS CORSET 12
25917	HEAVY SATIN STRAPLESS CORSET AND G-STRING 3
25924	SKULLDUGGERY CORSET 3
25926	CASABLANCA STRIPE TAPESTRY VEST STYLE CORSET 19
25943	BEAUTIFUL FLORAL TAPESTRY AND SPANDEX CORSET 2
25950	REVERSIBLE CORSET TOP—2 LOOKS IN ONE! 14
25951	REVERSIBLE WAIST CINCHER—2 LOOKS IN ONE! 17
25952	REVERSIBLE CORSET TOP! HAVE 2 LOOKS IN ONE! 9
25953	SATIN AND SPANDEX CORSET TOP 1
25954	SATIN AND SPANDEX CORSET TOP 5
25957	PLEATED RIBBON AND SATIN CORSET 15
25969	STRIPE TAPESTRY STRAPLESS CORSET 6
25970	LEOPARD STRETCH MESH CORSET 11
25971	STRETCH ZEBRA EMBOSSED SATIN BUSTIER 14
25972	LACE OVERLAY SATIN CORSET 5
27000	SATIN 3/4" FITTED PANT WITH SHIRRING 24
27002	SATIN 3/4" FITTED PANT 25
29000	STRETCH SATIN CORSET 10
29047	"PEBBLE" CHARMEUSE, STRAPLESS, CORSET 6
29063	ANGEL & LOVE STRETCH JACQUARD BUSTIER 14
29071	ASIAN TAPESTRY ZIP FRONT CORSET TOP 8
29074	CORSETS ARE A GIRL'S BEST FRIEND 13
29075	LIKE IT HOT BUSTIER 12
29078	GENTLEMEN PREFER BOWS 13
29081	SATIN AND LACE OVERLAY CORSET 4
29083	COTTON BLEND STRETCH SATIN CORSET 8
29084	STRETCH TAPESTRY COTTON BLEND CORSET 4
30023	SILK CHIFFON SKIRT 24
MM2112	MARILYN FOIL LIPS TEE 23
MM2113	MARILYN BUTTERFLY TANK 22

ORDERING INFORMATION

ALL ORDERS ARE WHOLESALE ONLY

Phone us directly: Toll Free 1-800-421-9359

Monday-Thurs. 6:00-3:30 (PST), Fri 6:00-2:30 (PST)

Fax us directly: Toll Free 1-888-261-6693

7 days a week, 24 hours a day

SIZE CHART

SMALL: Dress sizes 6-8

Bust 32-34, Cup sizes A-B
Waist 23-25, Hips 34-36

MEDIUM: Dress sizes 10-12

Bust 34-37, Cup sizes B-C
Waist 25 1/2-28, Hips 36-39

LARGE: Dress Size 14

Bust 37-40, Cup sizes B-C
Waist 28-31, Hips 39-41

X-LARGE: Dress sizes 16-18

Bust 40-43, Cup sizes B-C
Waist 31-34, Hips 41-44

Front cover: Corset No. 29084



9393
ALSO AVAILABLE
IN PLUS SIZES

9393
SATIN TAPESTRY FLOWERED
JACQUARD LONG-LINE BUSTIER
With lightly padded underwire cups,
hook & eye front, body controlling
side, front, and back boning, plus a
waist cinching lace-up back. Colors:
Emerald, Black, Hot Pink, Ivory,
Red, Royal. Sizes: 32-34-36-38.
Plus Sizes also, X9393: 38-40-42-
44. For added versatility, garment
comes with G-String and removable
Garters, separately packaged.



9512



25953
ALSO AVAILABLE
IN PLUS SIZES

Easy-to-Wear
Corset Top

9512
DOLCE STRIPE TUX BUSTIER
With slightly padded built in bra,
slimming boning, lace up back,
adjustable shoulder straps, hook &
eye side closure, and adjustable
removable garters. Comes with G-
string. Colors: Black/Purple,
Grey/Mauve. Sizes: 32-34-36-
38. Shown with No. 4227 Pants.

25953
SATIN AND SPANDEX CORSET
TOP With a sexy zipper front,
pretty Venice trim at top and bottom
and a form fitting, comfortable
spandex back. Colors: Black,
Red/Black, Lt.Pink/Black,
Cerise/Black. Sizes: 32-34-36-
38. Shown with No. 4227 Pants.
Also available in in Plus Sizes.

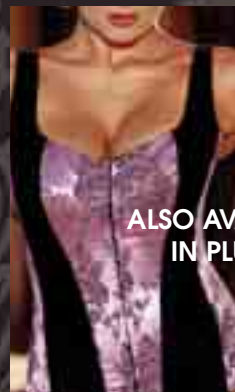




9511

9511
COTTON SATEEN
STRAPLESS CORSET

With flattering princess line styling, sweet heart neckline, slimming boning, lace up back, and front hook & eye closure. Comes with G-string. Colors: Black, Stone, Leopard. Sizes: 32-34-36-38. Shown with No. 4227 Pants.



25943

ALSO AVAILABLE
IN PLUS SIZES



25943
BEAUTIFUL FLORAL TAPESTRY AND
SPANDEX CORSET *to hold and mold*
with your body. Corset has built up
straps that offer back strap adjustment,
hook & eye front closure, adjustable lace
up back. Colors: Black, Pink/Black,
Royal/Black, Red/Black. Sizes:
32-34-36-38. For added versatility,
garment comes with G-String and
removable Garters, separately packaged.
Shown with No. 219 Gloves.
Also available in in Plus Sizes.



25924

ALSO
AVAILABLE
IN PLUS
SIZES



25924
SKULLDUGGERY CORSET *With*
slimming boning, metal zipper front,
lace up ribbon back. Colors:
Black/Ivory, Ivory/Black. Sizes: 32-
34-36-38. For added versatility,
garment comes with G-String and
removable Garters, separately packaged.
Shown with No. 4252 Pants. Also
available in in Plus Sizes.

25917
HEAVY SATIN STRAPLESS CORSET
AND G-STRING *With exposed*
spiral boning, corded lace-up front
and back with metal hook busk and
elasticized strappy front. Colors: Red,
Black. Sizes: 32-34-36-38. For
added versatility, garment comes with
G-String and removable Garters,
separately packaged. Shown with
No. 219 Gloves. Also shown with No.
20317 *Chiffon Blouse. Color:*
Black. Sizes S-M-L.



25917
ALSO AVAILABLE
IN PLUS SIZES

20317



urban edge



29084

29084
STRETCH TAPESTRY COTTON BLEND CORSET
 With built up shoulder straps that adjust in back, hook & eye front, slimming boning, and waist cinching lace up back. Comes with G-string and removable garters. Colors: Black, French Blue. Sizes: 32-34-36-38. (Pants not for sale.)



29081

29081
SATIN AND LACE OVERLAY CORSET With net ruffles across bust and hem, slimming boning, bow tie at front, lace up back, adjustable shoulder straps and adjustable removable garters. Comes with G-string. Color: Black/Cerise, Ivory/Blush. Sizes: 32-34-36-38. Shown with No. 4227 Pants.



25954



25972

25954
SATIN AND SPANDEX CORSET TOP With zipper front, slimming boning down front and sides, stretch spandex back, and an adorable tie that can tie front or back. Colors: Hot Pink/Black, Purple/Black, Ivory/Black. Sizes: 32-34-36-38. Shown with No. 4227 Pants and No. 219 Gloves.

25972
LACE OVERLAY SATIN CORSET With a curvaceous hour glass shape, slight foam padding lining the front bodice, slimming boning, hook & eye side closure, lace up back and comes with G-string and removable garters. Colors: Red, Purple. Sizes: 32-34-36-38. Shown with No. 200 Gloves and No. 4227 Pants.

hourglass hot



25969

25969
STRIPE TAPESTRY STRAPLESS CORSET *With flattering princess line styling, convertible lace trim, slimming boning, lace up front with modesty panel, adjustable lace up back, hook & eye side closure, and adjustable removable garters. Comes with G-string. Colors Ivory, Pink. Sizes: 32-34-36-38. Shown with No. 4227 Pants.*



29047

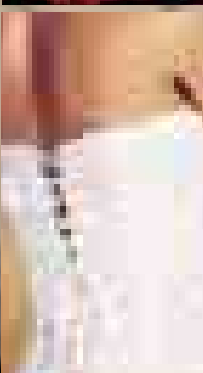
ALSO AVAILABLE
IN PLUS SIZES

29047
"PEBBLE" CHARMEUSE, STRAPLESS, CORSET *Be the LEADING LADY in your own Hollywood Fantasy when you wear our fabulous fitting and brilliant corset, with hook & eye side opening, waist slimming lace up back, and removable garters. Comes with matching G-string. Colors: Gold, White, Black, Red. Sizes: 32-34-36-38. Shown with No. 4227 Pants. Also available in Plus Sizes.*



ALSO AVAILABLE
IN PLUS SIZES

9001
STUNNING FLORAL TAPESTRY STRAPLESS CORSET *With gorgeous Venice trim, hook & eye front, waist cinching lace-up back. Colors: Antique White, Black, Emerald, Red, Violet. Sizes: 32-34-36-38. For added versatility, garment comes with Thong Panty and removable Garters, separately packaged. Jeans not for sale. Plus Sizes also, X9001: 38-40-42-44; and XX9001: 46-48-50.*



trendy transitionals

street-smart
satin



29083

Easy-to-Wear
Corset Top

29071

ALSO AVAILABLE
IN PLUS SIZES



29083
COTTON BLEND STRETCH SATIN
CORSET With zipper front closure and
power mesh spandex back for tighter fit plus
slimming boning, built up shoulder straps
with back strap adjustability. Comes with
G-string and removable garters. Colors:
Black, Oyster and Pewter. Sizes: 32-34-
36-38. Jeans not for sale.

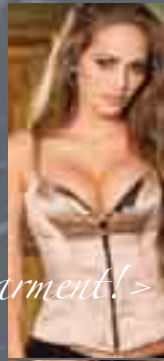
29071
ASIAN TAPESTRY ZIP
FRONT CORSET TOP With slimming boning,
stretchy spandex back,
and zipper front closure. Colors: Black/Black,
Purple/Black. Sizes: 32-
34-36-38. Shown with
No. 219 Gloves, No. 4227
and No. 4250 Pants. Also
available in Plus Sizes.

[Reversible]



25952

<same garment!>



<same garment!>

<same garment!>

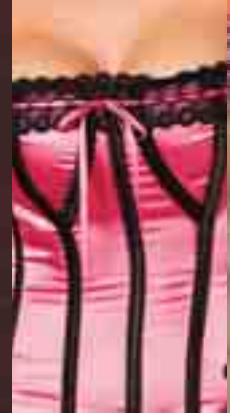
25952
REVERSIBLE CORSET TOP! HAVE
2 LOOKS IN ONE! Satin and spandex CORSET TOP has built up
straps, reversible zipper front and buttons that you button up or fold
down for a sexier look. One side is Red and turn it over and the other
side is Black. The choice is yours. Colors: Olive/Brown, Red/Black,
Brown/Chocolate. Sizes: 32-34-36-38. Shown with No. 4227 Pants.



25907
ALSO AVAILABLE
IN PLUS SIZES

25907
SATIN CORSET WITH BREAK AWAY ZIPPER FRONT With slimming boning, lace up back with strong cording lacers. Colors: Black, Hot Pink, Emerald, Red, Silver, Champagne. Sizes: 32-34-36-38. For added versatility, garment comes with G-String and removable Garters, separately packaged. Shown with No. 4207 Pants and No. 219 Gloves. Also available in Plus Sizes.

29000
STRETCH SATIN CORSET With contrasting, slimming boning, lace trim, hook & eye adjustable back, adjustable straps. Colors: Black/Pink, Pink/White, Purple/Black, Hot Pink/Black. Sizes: 32-34-36-38. For added versatility, garment comes with removable Garters, separately packaged. Shown with Pants No. 27002. Also available in Plus Sizes.



29000
ALSO AVAILABLE
IN PLUS SIZES



25970

25970
LEOPARD STRETCH MESH CORSET Has softly padded under wired cups, sweetheart neckline, ribbon trim, adjustable shoulder straps, ribbon lace up back, and hook & eye side closure. Comes with removable adjustable garters and a G-string. Color: Leopard/Red. Sizes: 32-34-36-38. Shown with No. 219 Gloves and No. 4227 Pants.



9510

9510
SATIN STRAPPY CORSET With flattering princess line styling, slimming exposed spiral boning, adorned with skull buttons, adjustable shoulder straps, hook & eye spandex back, and adjustable removable garters. Comes with G-string. Color: Black. Sizes: 32-34-36-38. Shown with No. 4227 Pants.



new-fashioned shapewear



25915

**ALSO AVAILABLE
IN PLUS SIZES**



29075

classic romance

29075

LIKE IT HOT BUSTIER

Our Satin corset enhanced with trapunto and lace overlay cups, slightly padded underwire cups, slimming boning, lace up back, and hook and eye side closure. Includes removable, adjustable garters and a G-string. Colors: Red, Black. Sizes: 30-32-34-36-38.



25915

VELVET FLOCKED SATIN AND "EYELASH" LACE STRAPLESS CORSET

With ribbon trimmed sheer ruffle, and lace up ribbon back, with hook & eye side closure. Colors: Emerald, Pink, Red. Sizes: 32-34-36-38. For added versatility, garment comes with G-String and removable Garters, separately packaged. Shown with No. 219 Gloves. Also available in Plus Sizes.



29074



**The
Platinum
Collection**

BY *Shirley*
OF HOLLYWOOD



29078
**ALSO AVAILABLE
IN PLUS SIZES**

29074

**CORSETS ARE A GIRL'S
BEST FRIEND**

Satin corset with built up shoulder straps, slimming boning, lace up back, and hook and eye side closure. Includes removable, adjustable covered garters and a G-string. Colors: Ivory/Gold, Black/Silver. Sizes: 30-32-34-36-38.

29078

GENTLEMEN PREFER BOWS

Satin and lace corset with slimming boning, lace up back, hook and eye side closure, and bow front. Includes removable, adjustable covered garters and a G-string. Colors: Red/Black. Sizes: 30-32-34-36-38. Also available in Plus Size.





25950
ALSO AVAILABLE
IN PLUS SIZES

<same garment!>

[Reversible]

25950
REVERSIBLE CORSET TOP— 2 LOOKS IN ONE! *Satin CORSET TOP with reversible zipper, slimming boning, and form fitting adjustable lace up back. Color: Black (with Red)/Leopard. Sizes: 32-34-36-38. Shown with No. 25112 Pants. Also available in Plus Size.*

25957
PLEATED RIBBON AND SATIN CORSET *With foam lined, princess line styling and sweet heart neckline, slimming boning, and lace up back, hook & eye side closure, and adjustable removable garters. Comes with G-string. Colors: Platinum/Black, Pink/Black, Frosted Violet/Black. Sizes: 32-34-36-38. Shown with No. 203 Gloves and No. 25112 Pants. Also available in Plus Size.*



PADDED PUSH UP
25971

go crazy with color

25971
STRETCH ZEBRA EMBOSSED SATIN BUSTIER *Has a softly padded floating lace bra with removable push up pads, slimming boning, adjustable center front plus adjustable shoulder straps, and hook & eye back closure. Comes with removable adjustable garters and a G-string. Color: Pink. Sizes: 32-34-36-38. Shown with No. 4227 Pants.*

8997
SATIN TAPESTRY FLOWERED JACQUARD STRAPLESS CORSET *With contrasting boning, Venice trim, hook & eye front and waist slimming lace-up back. Colors: Red, Emerald, Hot Pink, Ivory, Royal. Sizes: 32-34-36-38. For added versatility, garment comes with G-String and removable Garters, separately packaged. Shown with No. 30023 Skirt. Also available in Plus Sizes.*



25957
ALSO AVAILABLE
IN PLUS SIZES



8997
ALSO AVAILABLE
IN PLUS SIZES





laid-back layering

623
STRETCH SATIN AND BLACK LACE WAIST CINCHER With hook and eye front, lace-up back. Colors: Black, Berry, Red. For added versatility, garment comes with removable Garters, separately packaged. Sizes: S-M-L. Shown with No. 2111 Satin Shirt.

665
DOLCE STRIPE WAIST CINCHER With hook & eye front closure and adjustable garters. Colors: Grey/Mauve, Black/Purple. Sizes: S/M, L/XL. Shown with No. 25136 Blouse and No. 4252 Pants.



665



667

667
COTTON SATIN WAIST CINCHER
With slimming boning, waist cinching lace up back, hook & eye front and belt. Colors: Black, Leopard, Stone. Sizes: S-M-L-XL. Shown with No. 2115 Halter Top, No. 2116 Lace Shirt, No. 20317 Chiffon Blouse and No. 4227 Pants.

25951
REVERSIBLE WAIST CINCHER—2 LOOKS IN ONE!
Satin WAIST CINCHER with reversible zipper, slimming boning, and form fitting adjustable lace up back. Color: Black (with Red)/Leopard. Sizes: 32-34-36-38. Shown with No. 2111 Blouse.



[Reversible]

25951

<same garment!>



<same garment!>



2111



25136



25136

665

2111
STRETCH SATIN BLOUSE With shirred cap sleeves, button down front and fitted bodice. Colors: Black, Red. Sizes: S-M-L-XL.

25136
SHEER CHIFFON BLOUSE has a sexy button closure front and ruffled high neck plus long sleeves with self ruffled cuffs. Colors: Black, White. Sizes: S-M-L-XL. Shown with No. 665 Waist Cincher (see page 16). (G-string for photography only.)

25926
CASABLANCA STRIPE TAPESTRY VEST STYLE CORSET With a very sexy décolletage, hook & eye front closure, ribbon lace up back, adjustable halter neck closure. Colors: Black, Pink, Ivory. Sizes: 32-34-36-38. For added versatility, garment comes with G-String and removable Garters, separately packaged. Shown with No. 219 Gloves. Jeans not for sale. Also available in Plus Sizes.

**Uptown,
Downtown—
You Choose!**

Pair any Shirley top with your choice of bottoms for a whole wardrobe of outfits. Long, short, sleek 'n skinny or romantically ruffled, these trendy go-withs go anywhere, from clubbing to couture.



25926

ALSO AVAILABLE
IN PLUS SIZES



versatility, wearability



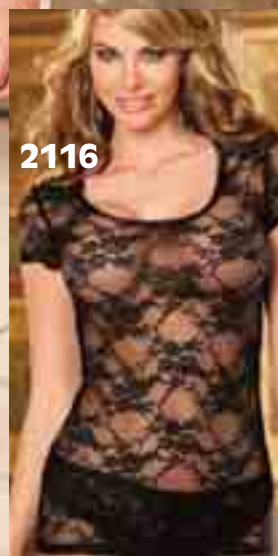
2115



2115
667



2116
25907
4250



2116



374
34



2115
COTTON SPANDEX HALTER TOP
With stretch lace bodice and comes with slightly padded cups. Color: Black. Sizes: S-M-L. Shown with No. 667 Waist Cincher (see page 17).

2116
STRETCH LACE T-SHIRT
With rounded neck and short cap sleeves. Colors: Black, Ivory. Sizes: S-M-L. Shown with No. 36 Thong, No. 25907 Corset (see page 10) and No. 4250 Pants (see page 25).

374
SHINY TEXTRONIC STRETCH LACE BANDEAUX TOP that is fully lined and elasticized top and bottom. Perfect to wear under our sheer shirts. Colors: Black, Ivory. Sizes: S-M-L-XL. Shown with No. 34 Thong and No. 35 Hipster.

34
TEXTRONIC STRETCH LACE THONG
With satin spandex band and rhinestone circle accent. Colors: Black, Ivory. Sizes: S-M-L-XL.



374
35



35
TEXTRONIC STRETCH LACE HIPSTER
With satin spandex band with rhinestone circle accent and "CHEEKY" back. Colors: Black, Ivory. Sizes: S-M-L-XL.



MM2113
MARILYN BUTTERFLY TANK
COLORS: WHITE.
SIZES: XS, S, M, L, XL.

SOME
LIKE
IT



BLAVER LUNDIGAN

The Platinum Collection

BY Shirley
OF HOLLYWOOD
Inspired by Marilyn Monroe



MM2112
MARILYN FOIL LIPS TEE
COLORS: WHITE.
SIZES: XS, S, M, L, XL.



LOVE NEST



2105



30023

2105
VERA SATEEN SKIRT WITH RUFFLE
With elasticized waist and mock button detailing. Color: Black. Sizes: S-M-L-XL

30023
SILK CHIFFON SKIRT *With 3 tiered ruffles, fully lined and zip back. Color: Black. Sizes: S-M-L.*



27000



27000
SATIN 3/4" FITTED PANT WITH SHIRRING *With shirring below knee. Zipper front with pockets at rear. Color: Black. Sizes: 2-4-6-8-10-12.*



4227



4227
SPANDEX AND STRETCH LACE LONG PANTS *With sexy lace panel at rear with lace-up adjustability. Color: Black. Sizes: S-M-L-XL.*



4250



4250
HEAVY SPANDEX SKINNY STRETCH PANTS WITH ZIPPERS *With zippers at each side calf, elasticized waist. Color: Black. Sizes: S-M-L-XL*



4252



4252
KNIT SHIRRED SKINNY PANTS *With shapely, sexy, shirring along the sides. Color: Black. Sizes: S-M-L-XL.*



27002



27002
SATIN 3/4" FITTED PANT *With zipper front, side pockets and sexy shaped pockets on rear. Color: Black. Sizes: 2-4-6-8-10-12.*

hip-hot pants and flirty skirts for work, play and everyday

hip-hot pants and flirty skirts
for work, play and everyday



Jungle Love

Our slinky leopard print corset is the one for drivin' him mad... and makin' him crazy!

Trendy leopard is ferociously sexy with irresistible red ribbon trim down the front, accented with buttons and bow. You'll love the curvaceous comfort of softly padded underwire cups and the adjustable fit of a lace-up back; he'll adore the way the sweetheart neckline and clingy fabric make your cleavage and waist look absolutely ravishing. Try it with removable garters and a G-string to really bring out his animal instincts.

25970 Leopard Stretch Mesh Corset

With adjustable removable garters and G-string; Sizes 32, 34, 36 and 38.

Shown with 4227 Black Pants.